

AI-Based Disease Detection System

Dr. Waseema Masood¹, Syed Mohammed Badruddin Junaid²

¹Associate Professor; Deccan College of Engineering and Technology, Hyderabad, India.

²UG Scholar; Deccan College of Engineering and Technology, Hyderabad, India.

Abstract

*The rapid growth of Artificial Intelligence (AI) and Machine Learning (ML) technologies has significantly transformed the healthcare sector by enabling intelligent and automated medical solutions. The proposed **AI-Based Disease Detection System** is developed to predict diseases based on symptoms entered by users through a web-based application. The main objective of this system is to provide fast, accurate, and efficient preliminary disease prediction that can assist both users and healthcare professionals in early diagnosis.*

The system uses machine learning algorithms such as Decision Tree, Naïve Bayes, and Support Vector Machine (SVM) to analyze symptom data and identify the most probable disease. Medical datasets containing symptoms and disease information are collected, preprocessed, and used for training and testing the prediction models. The application is implemented using Python and Flask for backend processing, while HTML and CSS are used for developing the frontend interface.

The developed system provides a user-friendly environment where users can enter symptoms and receive prediction results within a short time. The proposed model helps reduce manual effort, improves accessibility to healthcare support, and assists in early disease identification. Experimental analysis shows that the system achieves reliable prediction accuracy and efficient performance.

This project demonstrates the effective application of Artificial Intelligence in healthcare and highlights the potential of machine learning techniques in improving disease prediction systems and supporting modern medical services.

INTRODUCTION:

Artificial Intelligence (AI) and Machine Learning (ML) have emerged as powerful technologies that are transforming various sectors, particularly healthcare. The integration of intelligent systems into medical applications has improved the efficiency, speed, and accuracy of disease diagnosis and prediction. With the increasing availability of digital medical data and advancements in computational techniques, AI-based healthcare systems are becoming an essential part of modern medical services.

Traditional disease diagnosis methods mainly depend on the expertise and experience of healthcare professionals. Although these methods are effective, they can sometimes be time-consuming and may lead to delays in diagnosis, especially when handling large amounts of patient data. In many rural and remote areas, limited access to healthcare facilities and specialists further increases the difficulty of obtaining timely medical assistance. These challenges create the need for intelligent systems that can support early disease detection and provide preliminary healthcare guidance.

The proposed **AI-Based Disease Detection System** is designed to predict diseases based on symptoms entered by users through a web-based application. The system utilizes machine learning algorithms to analyze symptom patterns and identify the most probable disease. By training predictive models on medical

datasets, the system can generate quick and reliable predictions that assist users in understanding possible health conditions at an early stage.

Machine learning algorithms such as Decision Tree, Naïve Bayes, and Support Vector Machine (SVM) are widely used for classification and prediction tasks in healthcare applications. These algorithms help improve diagnostic accuracy by learning relationships between symptoms and diseases from historical medical data. Proper preprocessing techniques such as data cleaning, normalization, and feature selection are also applied to enhance model performance.

The system is implemented using Python programming language with Flask framework for backend development and HTML and CSS for frontend design. The web-based interface allows users to enter symptoms easily and receive prediction results in real time. The proposed system aims to reduce diagnosis time, improve accessibility to healthcare support, and assist healthcare professionals in decision-making.

The remainder of this paper discusses the methodology, system architecture, implementation techniques, experimental results, and future enhancements of the proposed AI-Based Disease Detection System.

LITERATURE SURVEY:

Artificial Intelligence (AI) and Machine Learning (ML) technologies have gained significant importance in the healthcare sector due to their ability to analyze large amounts of medical data and assist in disease prediction and diagnosis. Several researchers have proposed intelligent healthcare systems that use machine learning algorithms to improve diagnostic accuracy and reduce the time required for medical analysis. Studies show that AI-based systems can support healthcare professionals in identifying diseases at an early stage and improving patient outcomes.

Many existing research works have focused on the use of supervised machine learning algorithms such as Decision Tree, Naïve Bayes, Random Forest, and Support Vector Machine (SVM) for disease prediction. These algorithms are widely used because of their effectiveness in classification problems and their ability to process healthcare data efficiently. Comparative studies indicate that SVM and ensemble learning methods often provide higher prediction accuracy, while Decision Tree algorithms offer better interpretability and faster execution.

Researchers have also explored the role of data preprocessing techniques such as feature selection, normalization, and dimensionality reduction in improving the performance of machine learning models. Proper preprocessing helps eliminate irrelevant data, handle missing values, and improve prediction efficiency. Several studies emphasize that the quality of medical datasets directly influences the accuracy and reliability of disease prediction systems. Recent advancements in deep learning and neural networks have further enhanced disease diagnosis systems. Deep learning models are capable of

Existing disease diagnosis systems mainly rely on traditional medical practices where doctors analyze patient symptoms, medical history, and laboratory reports to identify diseases. Although these methods are widely used and effective, they often require significant time, expert knowledge, and continuous monitoring. In many healthcare environments, especially in rural and remote areas, the lack of specialists and healthcare infrastructure creates delays in diagnosis and treatment.

Several existing healthcare applications and disease prediction systems have attempted to use machine learning techniques for automated diagnosis. These systems generally use algorithms such as Decision Tree, Naïve Bayes, Random Forest, and Support Vector Machine (SVM) to predict diseases based on symptoms or patient records. Some systems are limited to predicting only specific diseases such as

automatically extracting complex patterns from medical datasets and have shown promising results in detecting diseases such as cancer, heart disease, neurological disorders, and skin diseases. However, these approaches often require large datasets and high computational resources, which may not always be practical for small-scale healthcare applications.

Several studies have highlighted the importance of integrating AI with web and mobile healthcare applications to improve accessibility and provide real-time prediction services. Web-based disease detection systems allow users to enter symptoms and receive preliminary predictions instantly, reducing the dependency on immediate clinical consultation. Such systems are especially useful in rural and remote areas where healthcare facilities and specialist doctors may not be readily available.

Although significant progress has been made in AI-based healthcare systems, existing solutions still face challenges related to prediction accuracy, dataset limitations, privacy concerns, and real-world implementation. Some recent studies have pointed out that AI systems may fail in critical medical situations if not properly trained or validated. Therefore, continuous improvement of datasets, algorithms, and validation methods is necessary to enhance the reliability of disease prediction systems.

The proposed **AI-Based Disease Detection System** aims to overcome many of these limitations by providing a user-friendly web application that utilizes machine learning algorithms for efficient symptom-based disease prediction. The system focuses on delivering quick, reliable, and accessible preliminary diagnosis while supporting the growing integration of Artificial Intelligence in healthcare services.

EXISTING SYSTEM:

diabetes, heart disease, or cancer, while others focus only on hospital-based applications and are not easily accessible to common users.

Most existing systems also face challenges related to prediction accuracy, dataset quality, and user interaction. Many applications require complex input procedures and lack a user-friendly interface, making them difficult for non-technical users to operate. In addition, some systems are not capable of handling multiple symptoms efficiently and may produce inaccurate results due to insufficient training data or poor preprocessing techniques.

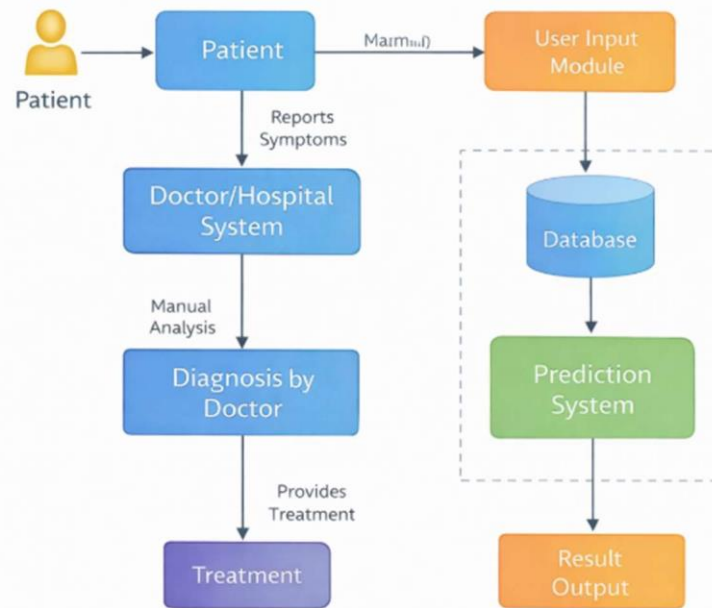
Another limitation of existing systems is that they often depend on static datasets and do not provide real-time accessibility through web-based platforms. Some healthcare prediction models require high computational resources, making them difficult to deploy in lightweight applications. Privacy and data

security are also major concerns in several existing healthcare systems.

Due to these limitations, there is a need for a more efficient, accessible, and user-friendly disease prediction system that can provide quick and reliable

preliminary diagnosis. The proposed AI-Based Disease Detection System addresses these issues by integrating machine learning algorithms with a web-based application to improve disease prediction accuracy and healthcare accessibility.

EXISTING SYSTEM ARCHITECTURE :



Existing System Architecture

PROPOSED SYSTEM:

The proposed **AI-Based Disease Detection System** is an intelligent web-based healthcare application designed to predict diseases based on symptoms entered by users. The system utilizes Artificial Intelligence and Machine Learning techniques to provide fast, accurate, and efficient preliminary disease prediction. The main objective of the proposed system is to assist users and healthcare professionals by reducing diagnosis time and improving accessibility to healthcare support.

The proposed system allows users to enter symptoms through a simple and user-friendly web interface. The entered symptoms are transmitted to the backend server, where preprocessing techniques are applied to prepare the data for prediction. The processed data is then analyzed using trained machine learning models capable of identifying relationships between symptoms and diseases.

Machine learning algorithms such as Decision Tree, Naïve Bayes, and Support Vector Machine (SVM) are

used to train the prediction model using medical datasets. These algorithms analyze symptom patterns and predict the most probable disease with improved accuracy. The system is designed to provide quick responses and reliable results, helping users gain early awareness of possible health conditions.

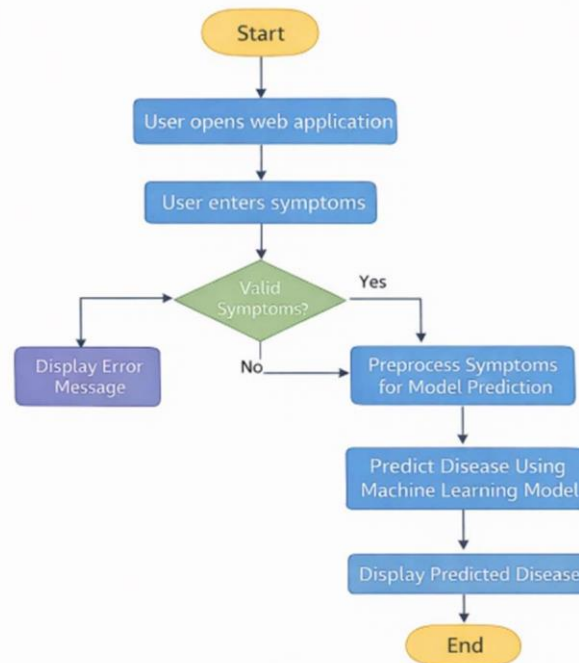
The proposed system is implemented using Python and Flask framework for backend development, while HTML and CSS are used for frontend design. The integration of web technologies with machine learning models enables real-time prediction through an online platform. The system also includes data preprocessing techniques such as data cleaning, normalization, and feature selection to improve model performance and prediction efficiency.

Compared to existing systems, the proposed system offers several advantages including automation, reduced manual effort, faster prediction, user-friendly interaction, and better accessibility. The web-based nature of the application allows users to access the

system from different locations without requiring direct hospital visits for preliminary diagnosis. The proposed AI-Based Disease Detection System demonstrates the practical application of Artificial

Intelligence in healthcare and provides an efficient solution for symptom-based disease prediction.

Activity Diagram:



Activity Diagram of Proposed AI-Based Disease Detection System

The **AI-Based Disease Detection System** provides several important features that make the application efficient, intelligent, and user-friendly. The system is designed to help users identify possible diseases quickly based on symptoms entered through the web application.

1. Symptom-Based Disease Prediction

The system allows users to enter symptoms through a web interface and predicts the most probable disease using machine learning algorithms.

2. Artificial Intelligence Integration

The application uses Artificial Intelligence and Machine Learning techniques to analyze symptom patterns and generate accurate prediction results.

3. User-Friendly Interface

The system provides a simple and interactive interface that enables users to use the application easily without requiring technical knowledge.

4. Fast Prediction Results

The prediction process is completed within a few seconds, providing quick responses and reducing diagnosis time.

5. Web-Based Application

The project is developed as a web application, allowing users to access the system from different devices using a web browser.

6. Machine Learning Model Support

The system supports machine learning algorithms such as Decision Tree, Naïve Bayes, and Support Vector Machine (SVM) for disease prediction.

7. Data Preprocessing

The application performs preprocessing techniques such as data cleaning, feature selection, and normalization to improve prediction accuracy.

8. Real-Time Analysis

The entered symptoms are analyzed instantly, and prediction results are displayed in real time.

9. Error Validation

The system validates user input and displays error messages if symptoms are not entered correctly.

10. Accurate Prediction

The trained machine learning model provides reliable disease prediction based on medical datasets.

11. Lightweight and Efficient

The system requires minimal hardware and software resources, making it easy to deploy and use.

12. Scalable System

Additional diseases, datasets, and advanced AI models can be integrated into the system in the future.

13. Accessible Healthcare Support

The project helps users obtain preliminary healthcare guidance without immediately visiting hospitals or clinics.

14. Easy Deployment

The application can be easily deployed using platforms such as Vercel and Render for online accessibility.

Software Requirements

The development and implementation of the **AI-Based Disease Detection System** require both software tools and programming technologies to ensure proper functioning of the application. The software requirements used for developing the system are listed below.

Operating System

- Windows 10 / Windows 11
- Linux or macOS can also be used for development and deployment purposes.

Programming Language

- Python 3.x

Python is used as the primary programming language because of its simplicity and extensive support for Artificial Intelligence and Machine Learning libraries.

Frontend Technologies

- HTML
- CSS
- JavaScript

These technologies are used to design and develop the user interface of the web application.

Backend Framework

- Flask Framework

Flask is used to handle server-side operations, process user requests, and connect the frontend with the machine learning model.

Machine Learning Libraries

- Scikit-learn
- NumPy
- Pandas

These libraries are used for data preprocessing, model training, prediction, and analysis.

Database

- CSV Dataset / MySQL (optional)

The system mainly uses medical datasets stored in CSV format for training and testing purposes.

Development Tools

- Visual Studio Code
- Jupyter Notebook

These tools are used for coding, testing, and model development.

Web Browser

- Google Chrome
- Microsoft Edge
- Mozilla Firefox

These browsers are used to access and test the web application.

Version Control

- Git and GitHub

Used for source code management and project hosting.

Deployment Platform

- Vercel (Frontend Deployment)
- Render / Railway (Backend Deployment)

These platforms are used for hosting the web application online.

Operating System (OS):

The **AI-Based Disease Detection System** is designed to operate on modern operating systems that support Python programming, web development frameworks, and machine learning libraries. The project is primarily developed and tested on the Windows operating system because of its compatibility with development tools and ease of use.

Supported Operating Systems

- Windows 10
- Windows 11
- Linux
- macOS

Backend Technology:

The backend technology used in your **AI-Based Disease Detection System** is:

- **Python** — main programming language
- **Flask** — backend web framework
- **Machine Learning Libraries:**
 - Scikit-learn
 - NumPy
 - Pandas

Since your project is deployed as a web application and performs symptom-based prediction, Flask is handling:

- user requests,
- API communication,
- symptom processing,
- and prediction response generation.

CONCLUSION AND FUTURE SCOPE:



The proposed **AI-Based Disease Detection System** successfully demonstrates the application of Artificial Intelligence and Machine Learning in the healthcare sector. The system is capable of predicting diseases based on symptoms entered by users through a web-based interface. By using machine learning algorithms and medical datasets, the application provides fast, reliable, and efficient preliminary disease prediction. The system reduces manual effort, improves accessibility to healthcare support, and assists users in obtaining early awareness about possible health conditions. The integration of Flask, Python, and machine learning libraries enables real-time prediction with a simple and user-friendly interface. Overall, the project highlights the importance of AI technologies in improving modern healthcare services and supporting early diagnosis.

REFERENCES

1. [Scikit-learn Official Documentation](#)
2. [Flask Official Documentation](#)
3. [NumPy Documentation](#)
4. [Pandas Documentation](#)
5. [TensorFlow Official Documentation](#)
6. [Kaggle Dataset Repository](#)
7. Introduction to Machine Learning with Python
8. Pattern Recognition and Machine Learning
9. World Health Organization, "Artificial Intelligence in Healthcare," Healthcare Reports.
10. S. Kaur et al., "Medical Diagnostic Systems Using Artificial Intelligence Algorithms," *IEEE Access*, 2020.
11. Md. Manjurul Ahsan et al., "Machine Learning-Based Disease Diagnosis: A Comprehensive Review," 2021.
12. Raina R. and Jha R.K., "Intelligent Healthcare System Using Machine Learning," *IEEE Access*, 2022.
13. Salman Ahmad Siddiqui et al., "IoT-Based Disease Prediction using Machine Learning," *Computer and Electrical Engineering*, 2023.
14. Natasha Nigar et al., "IoMT Meets Machine Learning for Chronic Disease Diagnosis," *Journal of Healthcare Engineering*, 2023.
15. Research papers and journals related to Artificial Intelligence, Machine Learning, and Disease Prediction Systems.